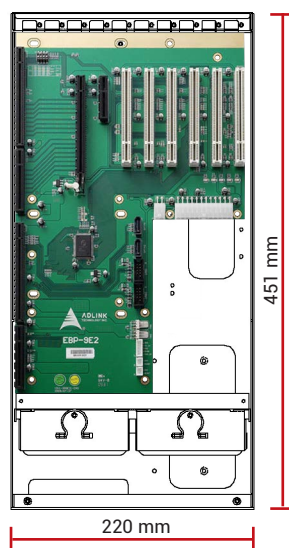


PC Industriali

Serie GO-B08 - Tower / Box per SBC 1.3



PC Industrial 6U 1/2 rack
 Fino a 2 chassis su vassoio 19"
 Configurato su richiesta
 Burn in climatico su ogni apparato
 Test Report di collaudo



Chassis

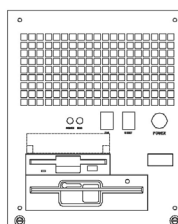
IP-289 - Rev.20

Dimensioni	Chassis 6U - 266 x 220 x 451 mm
Montaggio	Vassoio Rack 19" per inserimento 2 chassis
Materiale	Acciaio pre-zincato
Architettura	Backplane passivo PICMG 1.3
Varianti	GO-B08: Chassis 1/2 di rack colore nero.
Drives	1 x 5.25" + 1 x 3.5" esterni e 1 x 3.5" interno
Ventilazione	2 x ventole 90 mm (=51 CFM cad.)
Filtri	1 filtro per l'aria lavabile ed estraibile
Led sul fronte	LED per Power e funzionalità HDD
Pulsanti	Power On/Off e System Reset
Fronte	Connettore USB (in relazione alla SBC integrata)
Retro	Alloggiamento per 10 bracket full size
Colore	Nero, beige o altri colori su richiesta
Shock	15G durata 11ms - EN 60068-2-27
Vibrazioni	10-150Hz: 1G - EN 60068-2-6
Umidità	10 - 95% non condensata
Temperatura	Operativa 0°C... +50°C Storage -20°C... +70°C

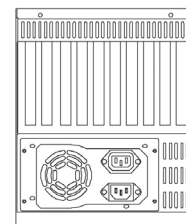
Complementi

Storage	<ul style="list-style-type: none"> • Dischi interni HDD / SSD / M.2 • Cassetti estraibili singoli o multipli per HDD / SSD / U.2 • Soluzioni SATA / SAS / NVMe
Media	<ul style="list-style-type: none"> • Masterizzatore DVD • Lettore interno CFLASH, Memory Stick, SD Card, SDHC etc. • Tastiera beige/nera italiana/inglese • Mouse ottico
Controller RAID	SATA / SAS / NVMe
Schede I/O	<ul style="list-style-type: none"> • Ethernet Server Adapter • GPGPU / Schede Video • Schede Multi-Head • Schede I/O Analogiche e Digitali • Schede FPGA • Schede MULTISERIALI • Frame Grabber • MIL-1553 / ARINC 429 / ARINC 418
Sistemi Operativi	<ul style="list-style-type: none"> • Windows® versioni Enterprise / Embedded • Windows® versioni Server • Linux

Fronte



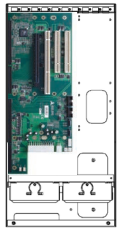
Retro



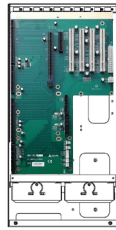
Single Board

	NUPRO-E47	PCIE-Q470	PCIE-Q370	NUPRO-E43
CPU Preferred	<ul style="list-style-type: none"> i7-12700E: 12C 4.8GHz, 65W i5-12500E: 6C 4.5GHz, 65W i3-12100E: 4C 4.2GHz, 60W 	<ul style="list-style-type: none"> i7-10700E: 8C, 2.9GHz, 65W i5-10500E: 6C, 3.1GHz, 65W i3-10100E: 4C, 3.6GHz, 65W 	<ul style="list-style-type: none"> i7-8700: 6C 3.20 GHz, 65W i5-8500: 6C 3.00 GHz, 65W i3-8100: 4C 3.60 GHz, 65W 	<ul style="list-style-type: none"> i7-7700: 4C 3.6GHz, 65W i5-7500: 4C 3.4GHz, 65W i3-7101E: 2C 3.9GHz, 54W i7-6700: 4C 3.4GHz, 65W i5-6500: 4C 3.2GHz, 65W
Chipset	Intel Q670E	Intel Q470	Intel Q370	Intel Q170
RAM	DDR5 – 4800 2x DIMM, max. 64GB	DDR4 – 2933 4 x DIMM, max. 128GB	DDR4 – 2666, 4 x DIMM, max. 64GB	DDR4 - 2133, 2 x DIMM, max.32GB
Graphics	VGA (up to 1920 x 1200@60Hz) HDMI (up to 4096 x 2160@30Hz) DVI-D (up to 1920 x 1200@60Hz)	HDMI (up to 4096 x 2160@30Hz)	VGA (1920 x 1080) DP (up to 4096 x 2304)	VGA (1920 x 1200) DVI-D (1920 x 1200)
Ethernet	2 GbE	2,5 GbE	2 GbE	2 GbE
SATA ports	6x SATA3 (support RAID 0,1,5,10)	4x SATA3 (support RAID 0,1,5,10)	6x SATA3 (support RAID 0,1,5,10)	4x SATA3 (support RAID)
M.2 slots	1x M.2 M Key 2280 with PCI-E Gen4 x4	1x M.2 A Key 2230 w/PCI-E x2/USB 2.0 1x M.2 B Key 3042/3052/2242/2280 w/SIM holder with PCI-E Gen3 x2 1x M.2 M Key 2280/2242 with PCI-E x4	1x M.2 M key 2280, Gen3 PCI-E x4	--
USB	3x USB 3.2 Gen 2x1 (10Gbps) on rear I/O 6x USB 3.2 Gen 1x1 via headers 1x USB 3.2 Gen 1x1 vertical type A 4x USB 2.0 to backplane	6x USB 2.0 6 x USB 3.2	7x USB 2.0 4x USB 3.2	4x USB 2.0 8x USB 3.0
COM	2x RS-232 2x RS-232/422/485	2x RS-232 2x RS-422 / 485	3x RS-232 1x RS-422 / 485	2x RS232 2x RS232/422/485
KB/MS	NO	NO	1 x 16 pin	1 pin header for PS/2
Other	Audio	Audio	Audio	Audio, LPT
I/O Bracket	1x HDMI, 2x LAN, 3x USB 3.2	1x HDMI , 2x LAN, 2x USB 3.2, 1x USB 3.2 Type C	1x VGA, 2x LAN, 2x USB 3.2	1x VGA, 2x LAN, 2x USB

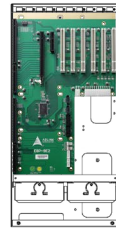
Backplane



EBP-5E1
1 x PICMG CPU, 1 x PCI-E x16,
1 x PCI-X, 2 x PCI



EBP-7E2
1 x PICMG CPU, 1 x PCI-E x16,
1 x PCI-E x4, 4 x PCI



EBP-9E2
1 x PICMG CPU, 1 x PCI-E x16,
1 x PCI-E x4, 6 x PCI



GHA-BRM1
Vassoio 19"
per alloggiamento
2 IPC GO-B08

Alimentatori



EN 62368

FSP600-80PSA
PS2 Single 600W

Output					
+3.3V	+5V	+12V	-5V	-12V	+5VSB
25A	25A	16A	0.1A	0.5A	4A
Input 90~264VAC Full Range					
MTBF 100.000 h					
Dimensioni 150x86x140 mm					



EN 62368

Z-MRPS2-500-2AC
PS2 Redundant 500W

Output					
+3.3V	+5V	+12V	-5V	-12V	+5VSB
20A	20A	40A	0.3A	0.5A	3A
Input 90V~264VAC					
MTBF >100.000 h					
Dimensioni 150x84x190 mm					



EN 62368

BES-540C
PS2 Single 400W 24VDC

Output					
+3.3V	+5V	+12V	-5V	-12V	+5VSB
25A	25A	30A	-	0.8A	3.5A
Input 20VDC...36VDC					
MTBF 121.000 h					
Dimensioni 150x86x140 mm					



Z-BMRW-5360V4V
PS2 Redundant 360W 24VDC

Output					
+3.3V	+5V	+12V	-5V	-12V	+5VSB
25A	25A	28A	-	0.8A	3.5A
Input 18VDC...36VDC					
MTBF 125.331 h					
Dimensioni 150x86x185 mm					



DC

BES-540T
PS2 Single 400W -48VDC

Output					
+3.3V	+5V	+12V	-5V	-12V	+5VSB
25A	25A	32A	-	0.8A	3.5A
Input -36VDC...-72VDC					
MTBF 143.878 h					
Dimensioni 150x86x140 mm					



DC

Z-DMRW-5500V4V
PS2 Redundant 500W -48VDC

Output					
+3.3V	+5V	+12V	-5V	-12V	+5VSB
25A	25A	41A	-	0.8A	3.5A
Input -36VDC...-72VDC					
MTBF 125.083 h					
Dimensioni 150x86x185 mm					