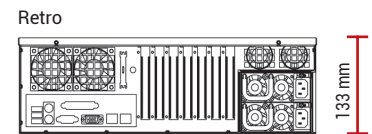
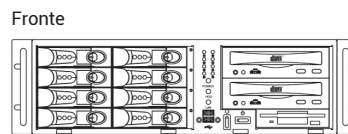
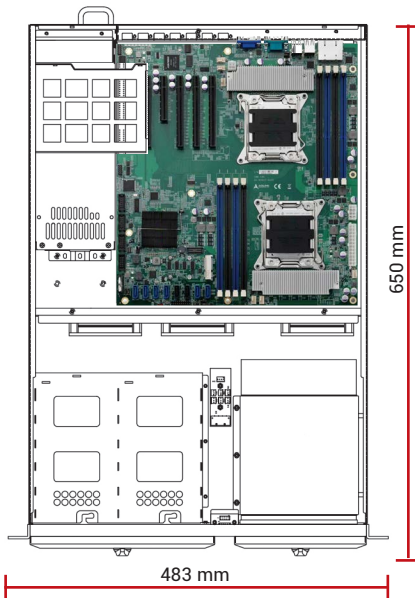


# Server Industriali

## Serie GO-A32 - Chassis per Motherboard



Server Industriale 3U  
 Configurato su richiesta  
 Burn in climatico su ogni apparato  
 Test Report di collaudo



### Chassis

IP-245- Rev.21

Dimensioni	Chassis 3U - 483 x 133 x 650 mm
Montaggio	Rack 19"
Materiale	Acciaio pre-zincato
Architettura	Motherboard ATX max 12" x 13"
Varianti	GO-A32-SAS-PF: Chassis, con ventole PWM, supporta SATA / SAS 12 Gbs, colore nero. Alimentatore singolo. GO-A32R-SAS-PF: Chassis, con ventole PWM, supporta SATA / SAS 12 Gbs, colore nero. Alimentatore ridondato.
Drives	2 x 5.25" + 1 x 3.5" FDD; 8 x 3.5" Swappable Trays
Ventilazione	3 x ventole 92mm (= 51 CFM cad.) 2 x ventole 60mm (= 23.5 CFM cad.) opzione 2 x ventole 40mm
Led sul fronte	LED per Power, funzionalità HDD e LAN
Pulsanti	Power On/Off Momentary (Pushbutton) e System Reset
Fronte	2 Porte drives con serratura, 2 x USB
Retro	Alloggiamento per 7 bracket full size
Colore	Nero, beige o altri colori su richiesta
Shock	15G durata 11ms - EN 60068-2-27
Vibrazioni	10-150Hz: 1G - EN 60068-2-6
Umidità	10 - 95% non condensata
Temperatura	Operativa 0°C... +50°C Storage -20°C... +70°C

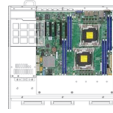
### Complementi

Storage	<ul style="list-style-type: none"> <li>Dischi interni HDD / SSD / M.2</li> <li>Cassetti estraibili singoli o multipli per HDD / SSD / U.2</li> <li>Soluzioni SATA / SAS / NVMe</li> </ul>
Media	<ul style="list-style-type: none"> <li>Masterizzatore DVD</li> <li>Lettore interno CFLASH, Memory Stick, SD Card, SDHC etc.</li> <li>Tastiera beige/nera PS2/USB italiana/inglese</li> <li>Mouse ottico PS2/USB</li> </ul>
Controller RAID	SATA / SAS / NVMe
Schede I/O	<ul style="list-style-type: none"> <li>Ethernet Server Adapter</li> <li>GPGPU / Schede Video</li> <li>Schede Multi-Head</li> <li>Schede I/O Analogiche e Digitali</li> <li>Schede FPGA</li> <li>Schede MULTISERIALI</li> <li>Frame Grabber</li> <li>MIL-1553 / ARINC 429 / ARINC 418</li> </ul>
Sistemi Operativi	<ul style="list-style-type: none"> <li>Windows® versioni Enterprise / Embedded</li> <li>Windows® versioni Server</li> <li>Linux</li> </ul>

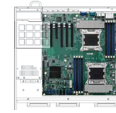
## Motherboard



**MDB-x10DRi/  
MDB-x10DRi-T**



**MDB-x10DRL-i**



**IMB-S90**

<b>CPU Preferred</b>		<ul style="list-style-type: none"> <li>E5-2603V4: 6C, 1.7GHz, 85W</li> <li>E5-2620V4: 8C, 2.10GHz, 85W</li> <li>E5-2630V4: 10C, 2.2GHz, 85W</li> <li>E5-2640V4: 10C, 2.40GHz, 90W</li> <li>E5-2608LV3: 6C, 2GHz, 52W</li> <li>E5-2630V3: 8C, 2.40GHz, 85W</li> <li>E5-2640V3: 8C, 2.60GHz, 90W</li> </ul>		<ul style="list-style-type: none"> <li>E5-2620: 6C, 2GHz</li> <li>E5-2648L: 8C, 1.8GHz</li> <li>E5-2658: 8C, 2.1GHz</li> <li>E5-2658V2: 10C, 2.4GHz</li> </ul>
<b>Chipset</b>	Intel C612		Intel C604	
<b>RAM</b>	DDR4 - 2400/2133/1866/ 1600MHz, 16 x DIMM, max. 2TB ECC REG.	DDR4 - 2400/2133/1866/ 1600MHz, 8 x DIMM, max. 1TB ECC REG.	DDR3 - 1600MHz, 8 x DIMM, max. 128GB ECC REG.	
<b>Graphics</b>	ASPEED AST2400 BMC VGA		ASPEED AST2300 BMC VGA	
<b>Ethernet</b>	2 GbE / T: 2x 10GBase-T Ethernet + 1 IPMI LAN port	2 GbE + 1 IPMI LAN port	2 GbE	
<b>SATA ports</b>	10 x SATA 600 (support RAID 0,1,5,10)		6 x SATA 600, 2 x SATA 300, (support RAID 0,1,5,10) 1 x Mini-PCIe or mSATA 600	
<b>M.2 slots</b>	--	--	--	
<b>NVME Ports</b>	--	--	--	
<b>USB</b>	6 x USB 2.0 5 x USB 3.0	5 x USB 2.0 4 x USB 3.0	8 x USB 2.0	
<b>COM</b>	2 x COM (1 header)			
<b>Other</b>	TPM		Audio 16 x DIO w/isolation	
<b>Expansion slots</b>	3x PCI-E 3.0 x16 3x PCI-E 3.0 x8	3x PCI-E 3.0 x8 1x PCI-E 3.0 x16 1x PCI-E 3.0 x4 (in x8) 1x PCI-E 2.0 x4 (in x8)	4x PCI-E 3.0 x16 1x PCI-E 2.0 x4 (in x8) 1x PCI-E 3.0 x8	
<b>I/O shield</b>	1 x COM, 1 x VGA, 2 x USB 2.0, 2 x USB 3.0, 2 x GbE, 1 x IPMI LAN		1 x COM, 1 x VGA, 4 x USB 2.0, 2 x GbE	

## Alimentatori

AC



EN 62368



Z-G1W2-5760V2V-PM12: 2U Red 760W

Output					
+3.3V	+5V	+12V	-5V	-12V	+5VSB
32A	32A	62A	-	0.8A	3.5A
Input 90 ~ 264VAC					
MTBF >122.147 h					
Dimensioni 101.2x84x300 mm					

AC



EN 62368



Z-FSP800-50FS: 2U Redundant 800W

Output					
+3.3V	+5V	+12V	-5V	-12V	+12VSB
25A	25A	65A	-	0.3A	4.5A
Input 90 ~ 264VAC					
MTBF 500.000 h					
Dimensioni 76x83.8x250 mm					

DC

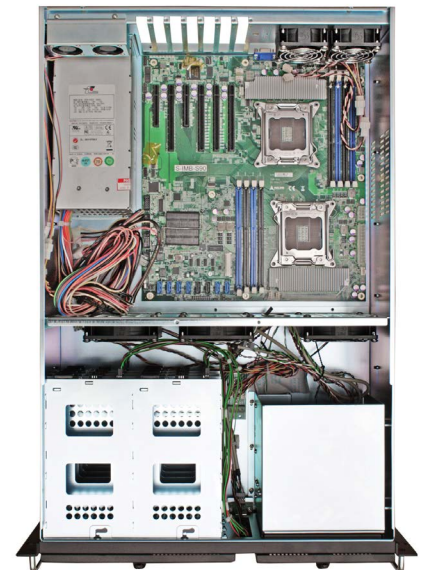


EN 62368



Z-DZRH2-5800V2V: 2U Red 800W

Output					
+3.3V	+5V	+12V	-5V	-12V	+5VSB
20A	20A	66A	-	0.5A	3.5A
Input -36 ~ -72VDC					
MTBF 173.645 h					
Dimensioni 76x84x245 mm					



GO-A32  
Vista dall'alto  
senza copertura superiore