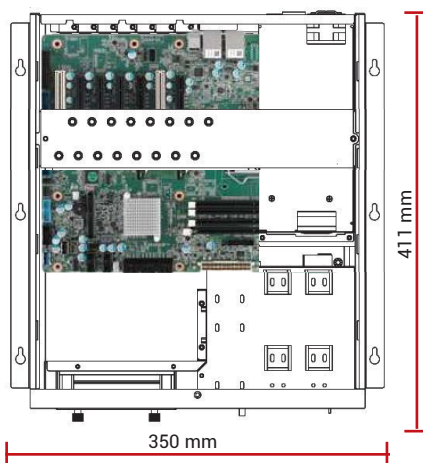


Workstation Industriali

Serie GO-081 - Tower / Box per Motherboard



Workstation Industriale 4U
 Configurato su richiesta
 Burn in climatico su ogni apparato
 Test Report di collaudo



Chassis

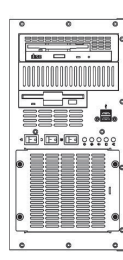
IP-295 - Rev.18

Dimensioni	Chassis 350 x 177 x 411 mm
Montaggio	Rack 19". Angolari per montaggio a muro o a pannello
Materiale	Acciaio pre-zincato
Architettura	Motherboard ATX max 12" x 10.5"
Varianti	GO-081: PC Node colore nero.
Drives	1 x 5.25" slim + 1 x 5.25" short max 150 mm di profondità + 2 x 3.5"
Ventilazione	1 x ventole 12 cm (= 90 CFM)
Led sul fronte	LED per Power, funzionalità HDD, ventole e temperatura
Pulsanti	Power On/Off, System Reset e Buzzer Reset
Fronte	2 x USB + 2 x USB opzionali
Retro	Alloggiamento per 7 bracket full size
Colore	Nero, beige o altri colori su richiesta
Shock	15G durata 11ms - EN 60068-2-27
Vibrazioni	10-150Hz: 1G - EN 60068-2-6
Umidità	10 - 95% non condensata
Temperatura	Operativa 0°C... +50°C Storage -20°C... +70°C

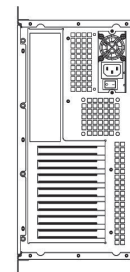
Complementi

Storage	<ul style="list-style-type: none"> • Dischi interni HDD / SSD / M.2 • Cassetti estraibili singoli o multipli per HDD / SSD / U.2 • Soluzioni SATA / SAS
Media	<ul style="list-style-type: none"> • Masterizzatore DVD • Lettore interno CFLASH, Memory Stick, SD Card, SDHC etc. • Tastiera beige/nera italiana/inglese • Mouse ottico
Controller RAID	SATA / SAS / NVMe
Schede I/O	<ul style="list-style-type: none"> • Ethernet Server Adapter • GPGPU / Schede Video • Schede Multi-Head • Schede I/O Analogiche e Digitali • Schede FPGA • Schede MULTISERIALI • Frame Grabber • MIL-1553 / ARINC 429 / ARINC 418
Sistemi Operativi	<ul style="list-style-type: none"> • Windows® versioni Enterprise / Embedded • Windows® versioni Server • Linux

Fronte



Retro



177 mm

Motherboard

	MBD-X13SAE-F	MBD-X12SCA-F	MBD-X11SCA-F	IMB-M45	IMB-M43-C236	IMBA-C2360-i2
CPU Preferred	<ul style="list-style-type: none"> • i7-12700E: 12C, 1.60GHz, 65W • i5-12500E: 6C, 2.90GHz, 65W • i3-12100E: 4C, 3.20GHz, 60W 	<ul style="list-style-type: none"> • i9-10900E-2G8: 10C, 3.3GHz, 65W • i9-10900-2G8: 10C, 3.3GHz, 65W • i7-10700E-2G9: 8C, 2.9GHz, 65W • i5-10400-2G9: 8C, 2.9GHz, 65W 	<ul style="list-style-type: none"> • E-2278GE: 8C, 3.3GHz, 80W • E-2226GE: 6C, 3.4GHz, 80W • i7-9700E: 8C, 2.6GHz, 65W • i5-9500E: 6C, 3.0GHz, 65W • i3-9100E: 4C, 3.1GHz, 65W 	<ul style="list-style-type: none"> • E-2278GE: 8C, 3.3GHz, 80W • E-2226GE: 6C, 3.4GHz, 80W • i7-9700E: 8C, 2.6GHz, 65W • i5-9500E: 6C, 3.0GHz, 65W • i3-9100E: 4C, 3.1GHz, 65W 	<ul style="list-style-type: none"> • E3-1275V5: 4C, 3.6GHz, 80W • E3-1225V5: 4C, 3.3GHz, 80W • E3-1275V6: 4C, 3.80GHz, 73W • E3-1225V6: 4C, 3.30GHz, 73W • i7-7700: 4C 3.6GHz, 65W • i5-7500: 4C 3.4GHz, 65W • i3-7101E: 2C 3.9GHz, 54W • i7-6700: 4C 3.4GHz, 65W • i5-6500: 4C 3.2GHz, 65W • i3-6100: 2C 3.7GHz, 51W 	<ul style="list-style-type: none"> • E3-1275V5: 4C, 3.6GHz, 80W • E3-1225V5: 4C, 3.3GHz, 80W • E3-1275V6: 4C, 3.80GHz, 73W • E3-1225V6: 4C, 3.30GHz, 73W • i7-7700: 4C 3.6GHz, 65W • i5-7500: 4C 3.4GHz, 65W • i3-7101E: 2C 3.9GHz, 54W • i7-6700: 4C 3.4GHz, 65W • i5-6500: 4C 3.2GHz, 65W • i3-6100: 2C 3.7GHz, 51W
Chipset	Intel W680	Intel W480	Intel C246	Intel C246	Intel C236	Intel C236
RAM	DDR5-4400MHz 4x DIMM max 128GB Unbuffered ECC/non-ECC UDIMM	DDR4-2933MHz 4x DIMM max 128GB Unbuffered ECC/non-ECC UDIMM	DDR4-2666MHz 4x DIMM max 128GB Unbuffered ECC/non-ECC UDIMM	DDR4-2666 / 2400MHz 4x DIMM max 128GB w/ECC and non ECC Registered	DDR4-2133 / 2400MHz 4x DIMM max 64GB w/ECC and non ECC Registered	DDR4 - 2133MHz 4x DIMM, max 64GB w/ECC and non ECC Registered
Graphics	VGA, DVI-D, DP, HDMI	VGA, HDMI, DVI-D, DP	HDMI, DVI-D, DP	VGA, HDMI 1.4, DP 1.2	VGA, 2 DP	VGA, DVI-D, HDMI, iDP
Ethernet	2 GbE	2 GbE	2 GbE	2 GbE	2 GbE	2 GbE
SATA Ports	8x SATA3 600, (support RAID 0,1,5,10)	4x SATA3 600, (support RAID 0,1,5,10)	8x SATA3 600, (support RAID 0,1,5,10)		6x SATA3 600, (support RAID 0,1,5,10)	
M.2 Slots	3x M.2 M-Key 2280, PCI-E 4.0 x4	2x M.2 M-Key 2280/110, PCI-E 3.0 x4	2x M.2 M-Key 2242/60/80/110, PCI-E 3.0 x4	--	--	--
NVME Ports	--	--	1x U.2 PCIe 3.0 x4	--	--	--
USB	4x USB 2.0 (2 via header, 2 rear) 3x USB 3.2 Gen1 4x USB 3.2 Gen2 2x USB 3.2 Gen2x2	2x USB 2.0 3x USB 3.2 Gen1 5x USB 3.2 Gen2	2x USB 2.0 4x USB 3.1 Gen1 4x USB 3.1 Gen2	6x USB 3.1 Gen2 6x USB 2.0	6x USB 2.0 8x USB 3.0	6x USB 2.0 5x USB 3.0
COM	1x COM Header	1x COM Header	1x COM Header	2x RS-232/422/485 4x RS-232	4x RS-232 2x RS-232/422/485	4x RS-232 2x RS-422/485
Other	ALC 888S HD Audio	ALC 888S HD Audio	ALC 888S HD Audio	Audio, PS2 combo, LPT, DIO	Audio, PS2, LPT, DIO	Audio, iRIS Remote Management Module
Expansion slots	<ul style="list-style-type: none"> • 2x PCI-E 5.0 x16 slots • 2x PCI-E 3.0 x4 • 1x 5V PCI 32bit 	<ul style="list-style-type: none"> • 1x PCI-E 3.0 x4, • 2x PCI-E 3.0 x16 slots (16/NA or 8/8) • 1x PCI 32bit 	<ul style="list-style-type: none"> • 2x PCI-E 3.0 x16 slots (PCI-E Links is NA/16 or 8/8) • 1x PCI-E 3.0 x4 slot (shared w/M.2-M1) • 1x PCI-E 3.0 x1 slot • 1x PCI 32bit 	<ul style="list-style-type: none"> • 2x PCI-E x8 Gen.3 Or • 1x PCI-E x16 Gen.3 + • 3x PCI-E x4 Gen.3 • 2x PCI Gen.2.2 	<ul style="list-style-type: none"> • PEG: PCI-E x16 slot, • PCI: PCI slot, • PEG2: PCI-E x16 slot, • PEG3: PCI-E x4 slot, • PCI-E1: PCI-E x4 slot, PCI-E2: • PCI-E x4 slot, PCI2: PCI slot 	<ul style="list-style-type: none"> • 2x PCI-E x8 (Gen3), • 2 x PCI • 3x PCI-E x4 (Gen3)
I/O shield	1x DP, 1x HDMI, 1x VGA, 1x DVI-D, IPMI LAN, 2x USB 2.0, 4x USB 3.2, 2x GbE, Audio	1x DP, 1x HDMI, 1x VGA, 1x DVI-D, IPMI LAN, 6x USB 3.2, 2x GbE, 6x USB 3, Audio	1x DP, 1x HDMI, 1x VGA (IPMI), 1x DVI-D, 2x USB 3.1 Gen1 Type A 1x USB 3.1 Gen2 Type A 1x USB 3.1 Gen2 Type C 2x GbE, Audio	1x DP 1.2, 1x HDMI 1.4, 1x VGA, 4x USB 3.1 Gen2 2x RS-232/422/485 2x GbE, Audio	2x DP, 1x VGA, PS2, 6x USB, 2x LAN, 2x COM, Audio	1x HDMI, 1x VGA, 1x DVI-D, PS2, 6x USB, 2x LAN, Audio

Alimentatori (profondità max 225 mm)



EN 62368

Z-P1H-5400V
1U Single 400W

Output					
+3.3V	+5V	+12V	-5V	-12V	+5VSB
22A	22A	32A	-	0.8A	3.5A
Input 90 ~ 264VAC Full Range					
MTBF 142.487 h					
Dimensioni 100x40.5x225 mm					



GO-081
Vista posteriore



GO-081
Vista dall'alto
senza copertura superiore